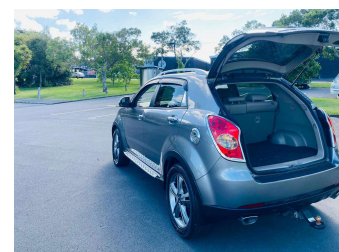


2011 Ssangyong Korando 4X4 AUTO DIESEL{NZ



Purchase Price


\$13,999

Includes GST, Registration & Licensing


Indicative repayments

\$71.33 per week*

Based on a 60 month term & no deposit.
Total repayments (260) = **\$18,545.89**



Gain peace of mind with
Mechanical Breakdown
Insurance. **Ask us how.**



Top features

- » Air Bags
- » Air Conditioning
- » Alarm
- » Alloy wheels
- » AUX
- » Car Alarm
- » CD Player
- » Central locking
- » Central Locking
- » Child seat anchor poin...
- » Cruise Control
- » Driver airbag
- » Electric Mirrors (Retr...
- » Fog Lights
- » Heated Seats
- » Parking Sensors
- » Passenger airbag
- » Power steering

Body Style
5 door, SUV / 4x4

Odometer
59,900 km

Engine
1998 cc

Fuel Type
Diesel

Transmission
Auto, AWD

Wheels
Factory Alloys

VIN
KPTB0B1SSBP034547

Interior
Beige, Leather

Safety



Based on 2023 VSRR rating

Reg No.
NAR353

Ext Colour
Grey

History
-

Seats
5 seats, Leather

CO2 Emissions
★★★★☆☆
224 grams/km

Energy Economy
★★★★☆☆

Annual fuel cost of \$3,470
8.6L per 100km

Cost per year is an estimate based on diesel price of \$2.00 per litre and an average distance of 14000 km includes Road User Charges. Emissions and Energy Economy figures standardised to 3P WLTP.

Stock ID: 2086



Cars Connect | Phone 021 229 7721 | Email info@carsconnect.co.nz
6 Drury Street, New Lynn, Auckland 0600, New Zealand
www.carsconnect.co.nz

* Cars Connect is not a lender nor a financial adviser. Any amounts displayed should not be seen as an offer of finance or taken as financial advice. The interest rate, fees and loan term used in this calculation may not actually represent those available from lenders. Actual interest rates, fees and loan terms will vary per lender and are typically based on an assessment of your credit risk and responsible lending criteria. Any repayment amounts displayed are indicative only and have been calculated using several other indicative inputs. The interest rate used in this calculation is an arbitrary 9.95%, however exact interest rates vary per lender. The term of the loan used in this calculation is 60 months. Exact terms available vary per lender although options typically include 6, 12, 18, 24, 36, 48 and 60 months. This calculation also includes two typical mandatory fees charged by lenders. These are an account admin fee of \$1.50 per month (other payment frequencies may be available) and a one-off establishment fee of \$495.00. Typically, this fee can be paid upfront or, as in this calculation, be capitalised over the contract term, ie. included in the loan amount. These fees can vary per lender and other non-mandatory fees and charges may also apply. The total amount of repayments has been calculated by multiplying 260 weekly repayments (based on a 60 month term) by the weekly repayment amount of \$71.33 which equals \$18,545.89. This calculator does not consider any of your own personal circumstances and we strongly suggest you seek budgeting advice prior to committing to any loan contract. Responsible lending criteria and lender terms and conditions will likely apply to any finalised loan contract. Proof of security and/or vehicle insurance may also be required before proceeding.